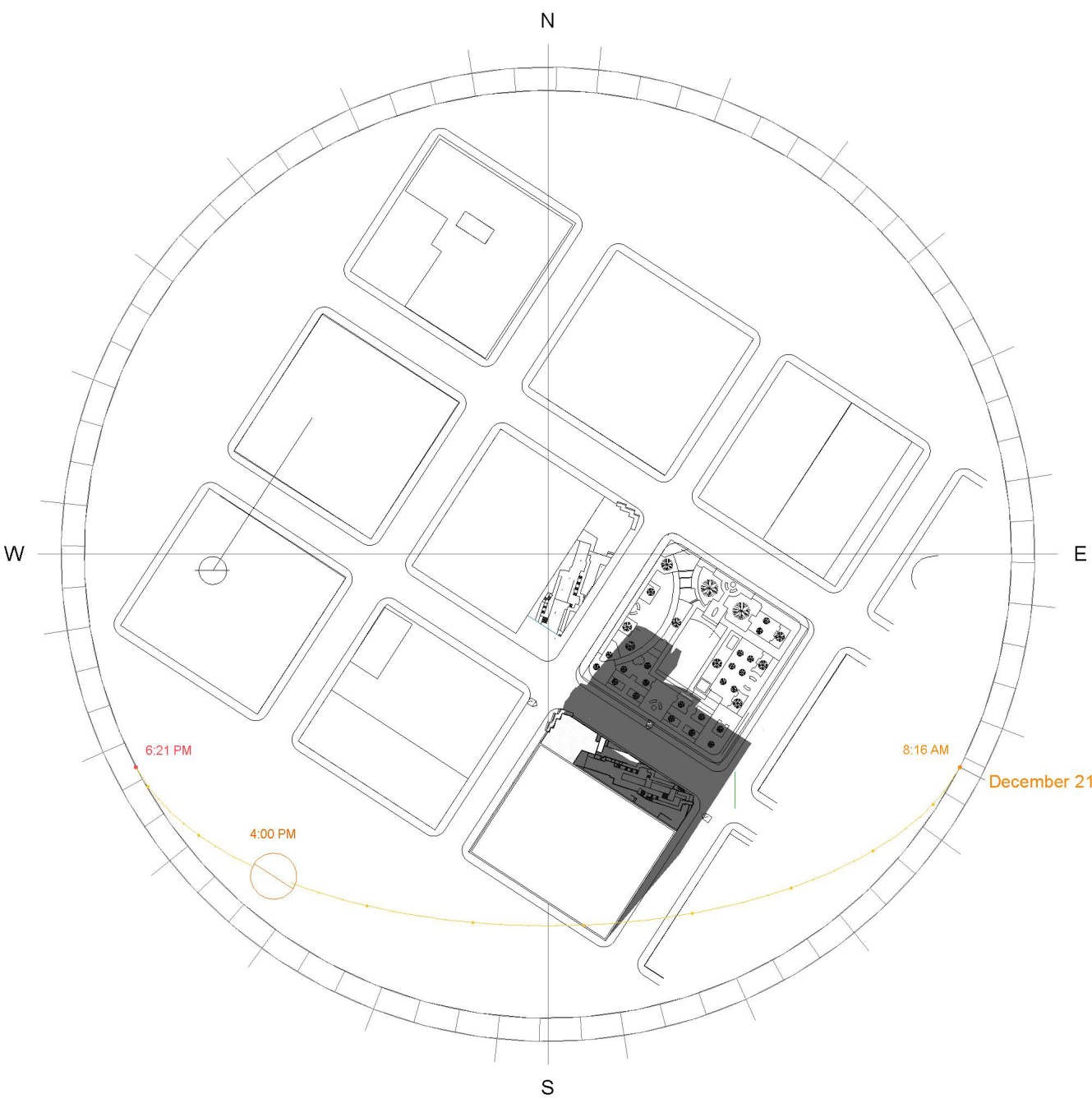


SUN AND SHADE ANALYSIS:

The sun and shade analysis covers the winter and summer solstice and the fall and spring equinox. Generally, the has no southern exposure. East and west exposures are minimized by the shallow depth of the site. The site’s northern exposure is uncompromised. The site is oriented to the angle of Houston’s CBD grid of a about 33 degrees. This increases morning sun from the east and minimizes the sun exposure to the west.

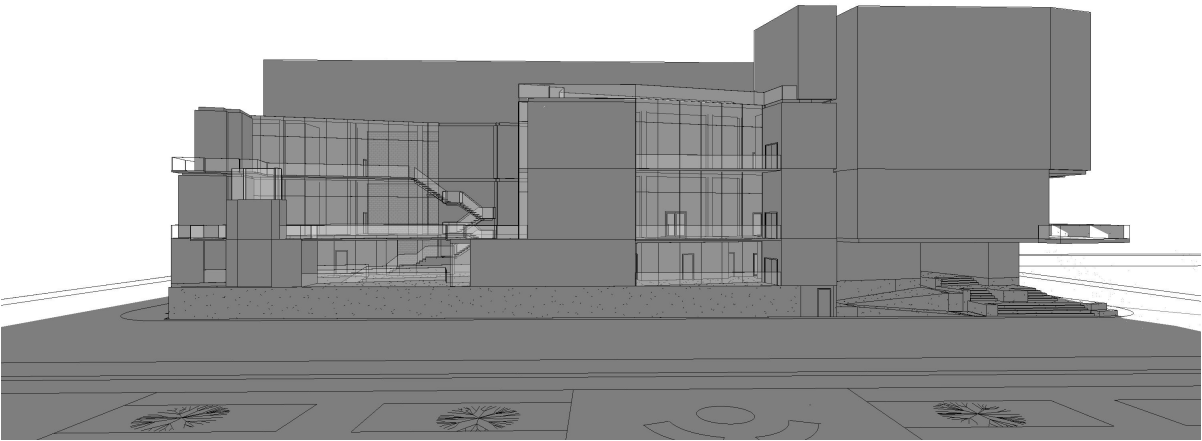
DECEMBER 21  
4:00PM



Project Name:  
3500 STUDIO PROJECT

City, Country  
Houston, Texas USA

Latitude/Longitude/Elevation  
29°45'46"N 95°22'59"W  
43ft



DAVID NORTHCUTT BROWN  
0398907

ARCH 3427  
TECHNOLOGY 3

DOSSIER ONE